

Cynomolgus SEZ6 Protein

Cat. No. SEZ-CM106



Description

Source	Recombinant Cynomolgus SEZ6 Protein is expressed from HEK293 with His tag at the C-Terminus. It contains Leu20-His927.
Accession	A0A2K5WPJ4
Molecular Weight	The protein has a predicted MW of 99.11 kDa. Due to glycosylation, the protein migrates to 150-180 kDa based on Bis-Tris PAGE result.
Endotoxin	Less than 1EU per µg by the LAL method.
Purity	> 95% as determined by Bis-Tris PAGE > 95% as determined by HPLC

Formulation and Storage

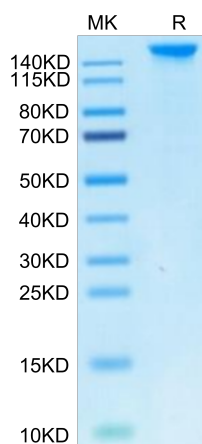
Formulation	Lyophilized from 0.22µm filtered solution in PBS (pH 7.4). Normally 8% trehalose is added as protectant before lyophilization.
Reconstitution	Centrifuge the tube before opening. Reconstituting to a concentration more than 100 µg/ml is recommended. Dissolve the lyophilized protein in distilled water.
Storage	-20 to -80°C for 12 months as supplied from date of receipt. -80°C for 3 months after reconstitution. Recommend to aliquot the protein into smaller quantities for optimal storage. Please minimize freeze-thaw cycles.

Background

Seizure-related protein 6 (Sez6) contributes to chronic pain development as sez6 knockout mice show attenuated pain behaviours after peripheral nerve injury, compared with control mice. The type I transmembrane isoform of Sez6 is cleaved by the β -amyloid precursor protein cleavage enzyme 1 (BACE1), resulting in Sez6 extracellular domain shedding from the neuron surface.

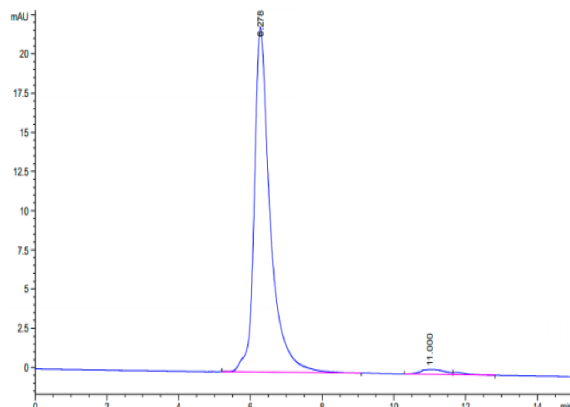
Assay Data

Bis-Tris PAGE



Cynomolgus SEZ6 on Bis-Tris PAGE under reduced condition. The purity is greater than 95%.

SEC-HPLC



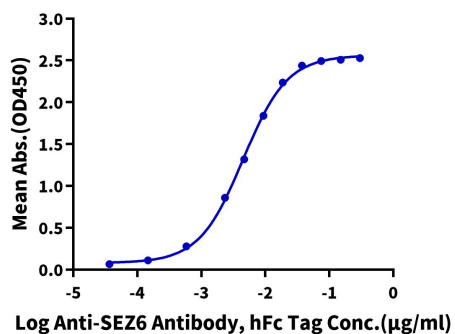
The purity of Cynomolgus SEZ6 is greater than 95% as determined by SEC-HPLC.

Assay Data

ELISA Data

Cynomolgus SEZ6, His Tag ELISA

0.2µg Cynomolgus SEZ6, His Tag Per Well



Immobilized Cynomolgus SEZ6, His Tag at 2µg/ml (100µl/Well) on the plate. Dose response curve for Anti-SEZ6 Antibody, hFc Tag with the EC50 of 4.5ng/ml determined by ELISA (QC Test).